


Fisher Engineering

P.O. Box 529 Rockland, Maine 04841

January 2, 2006
Lit. No. 68161, Rev. 03

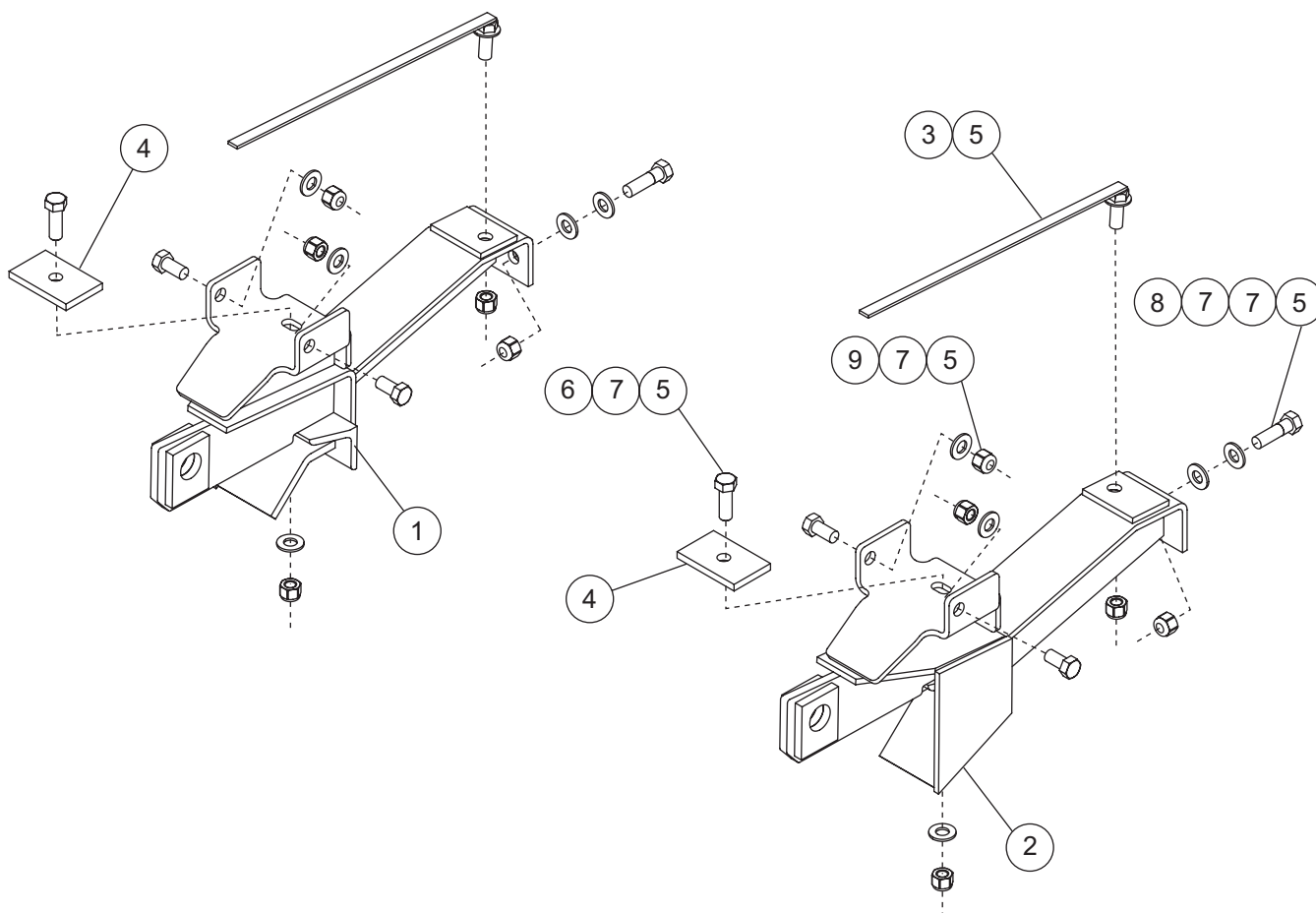
Minute² SYSTEM

MOUNT KIT

GM K1500 Silv/Sierra
GM Avalanche 1500

2003 -
2004 -

Parts List



| 7168 Mount Kit | | | | | | | |
|-----------------------|-------|-----|---|-----------|-------|-----|---------------------------------|
| Item | Part | Qty | Description | Item | Part | Qty | Description |
| 1 | 68156 | 1 | Pushplate – PS | 4 | 26061 | 2 | Backing Plate |
| 2 | 68155 | 1 | Pushplate – DS | ns | 68154 | 1 | Bolt Bag – 7168 |
| 3 | 63330 | 2 | 1/2-13 x 1-1/4 Hex Flange Cap Screw with Handle | | | | |
| 68154 Bolt Bag – 7168 | | | | | | | |
| 5 | 91335 | 10 | 1/2-13 Hex Locknut GB | 8 | 90101 | 2 | 1/2-13 x 1-3/4 Hex Cap Screw G5 |
| 6 | 90210 | 2 | 1/2-13 x 1-1/2 Hex Cap Screw G5 | 9 | 90575 | 4 | 1/2-13 x 1-1/4 Hex Cap Screw G5 |
| 7 | 90572 | 16 | 1/2 Hardened Flat Washer | | | | |
| ns = not shown | | | | G = grade | | | |

Copyright © 2006 Douglas Dynamics, L.L.C. All rights reserved. This material may not be reproduced or copied, in whole or in part, in any printed, mechanical, electronic, film or other distribution and storage media, without the written consent of Fisher Engineering. Authorization to photocopy items for internal or personal use by Fisher Engineering outlets or snowplow owner is granted.

Fisher Engineering reserves the right under its product improvement policy to change construction or design details and furnish equipment when so altered without reference to illustrations or specifications used. Fisher Engineering and the vehicle manufacturer may require and/or recommend optional equipment for snow removal. Do not exceed vehicle ratings with a snowplow. Fisher Engineering offers a limited warranty for all snowplows and accessories. See separately printed page for this important information. The following are registered (®) trademarks of Douglas Dynamics, L.L.C.: FISHER®, Minute Mount® 2.

Printed in U.S.A.