

CARTON WP MOUNTING INSTRUCTIONS

Since all dump beds are different, this hitch is the closest to being used on most of these machines

Recommended procedure to mount GT-77ATV to bed

1. Remove Tailgate.
2. Assemble the hitch to the point shown in Photo 1.

Photo 1

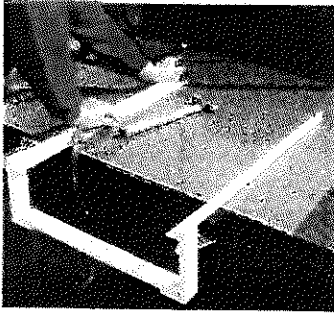
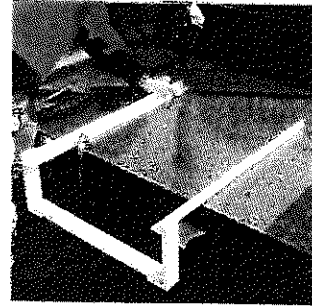


Photo 2



3. Position on bed as shown in Photo 1 or 2. The two holes should be to the rear of the bed.
4. It is easiest to clamp in place so it will not move.
5. Check underside of bed to make sure you will not drill into something that you shouldn't.
6. It may be necessary to move the hitch right or left to drill the two front (closest to driver) holes and not hit something.
7. Either center punch as in Photo 1 or drill through the hitch in Photo 2 with an 11/32 drill.
8. Slide flat as in Photo 3 and connect to front bolt.
9. Connect rear of flat to frame as in Photo 4.
10. Repeat on other side.
11. Tighten the 5/16 bolts to pinch the bed between the mounting bars.
12. Make sure the hitch is securely in place and then mount seeder and brace rods per other instructions.

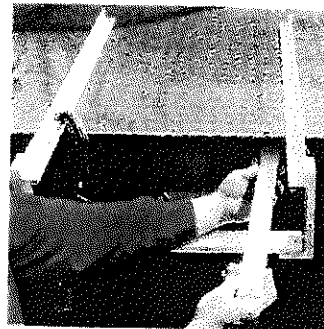


Photo 3

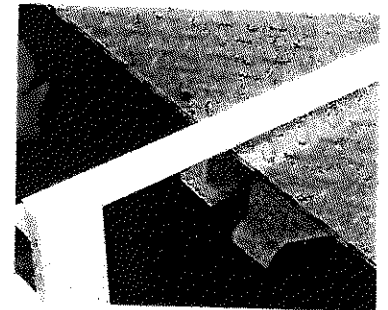


Photo 4

THIS HITCH WILL ALSO WORK ON ATV RACKS. NO HOLES NEED TO BE DRILLED. TO ASSEMBLE, PUT THE RACK OF THE ATV BETWEEN THE BARS AND TIGHTEN. LEAVE ENOUGH SPACE BETWEEN THE REAR OF THE MACHINE AND SEEDER SO THE OPENING GATE WILL WORK WITHOUT HITTING ATV.